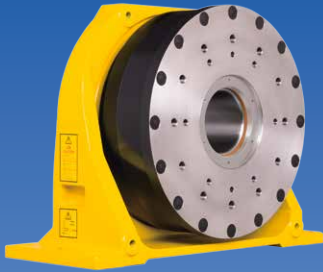


FANUC Positioner



1-axis positioner



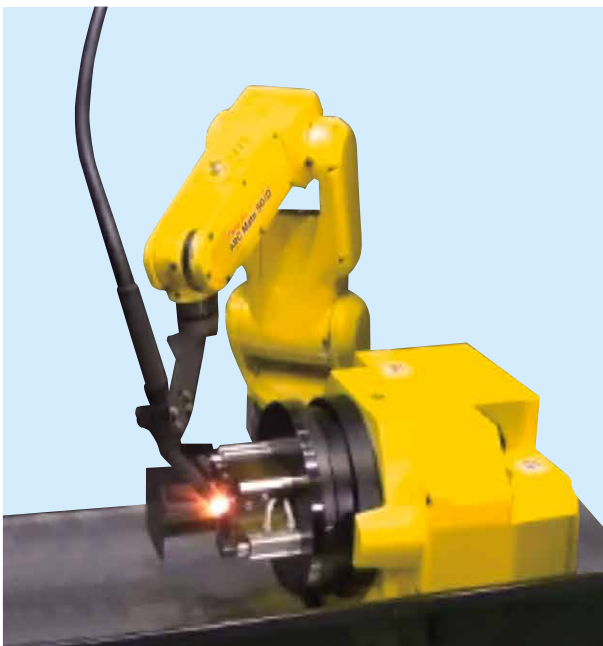
2-axis positioner

Features

This is the Positioner for robot system. The positioner can move with high speed, high accuracy, and high payload by using the same drive unit as a robot.

- A coordinated motion function integrated into FANUC Robot makes it possible to keep optimized constant relative speed and posture.
- The positioner is realized a compact body with improved allowable moment, inertia, and load capacity.
- For 2-axis positioner, a welding earth cable and plenty piping/wiring are integrated into a hollow drive mechanism. For 1-axis positioner, a hollow type and a small type are available.
- For 1-axis positioner, a follower unit is available, and a long part can be welded. Also the continuous turn option of welding earth cable and plenty piping/wiring is available.
- ROBOGUIDE is used to create a coordinated motion program easily.
- The positioner can be installed on the floor, upside-down or inclined at any angle.

Application system



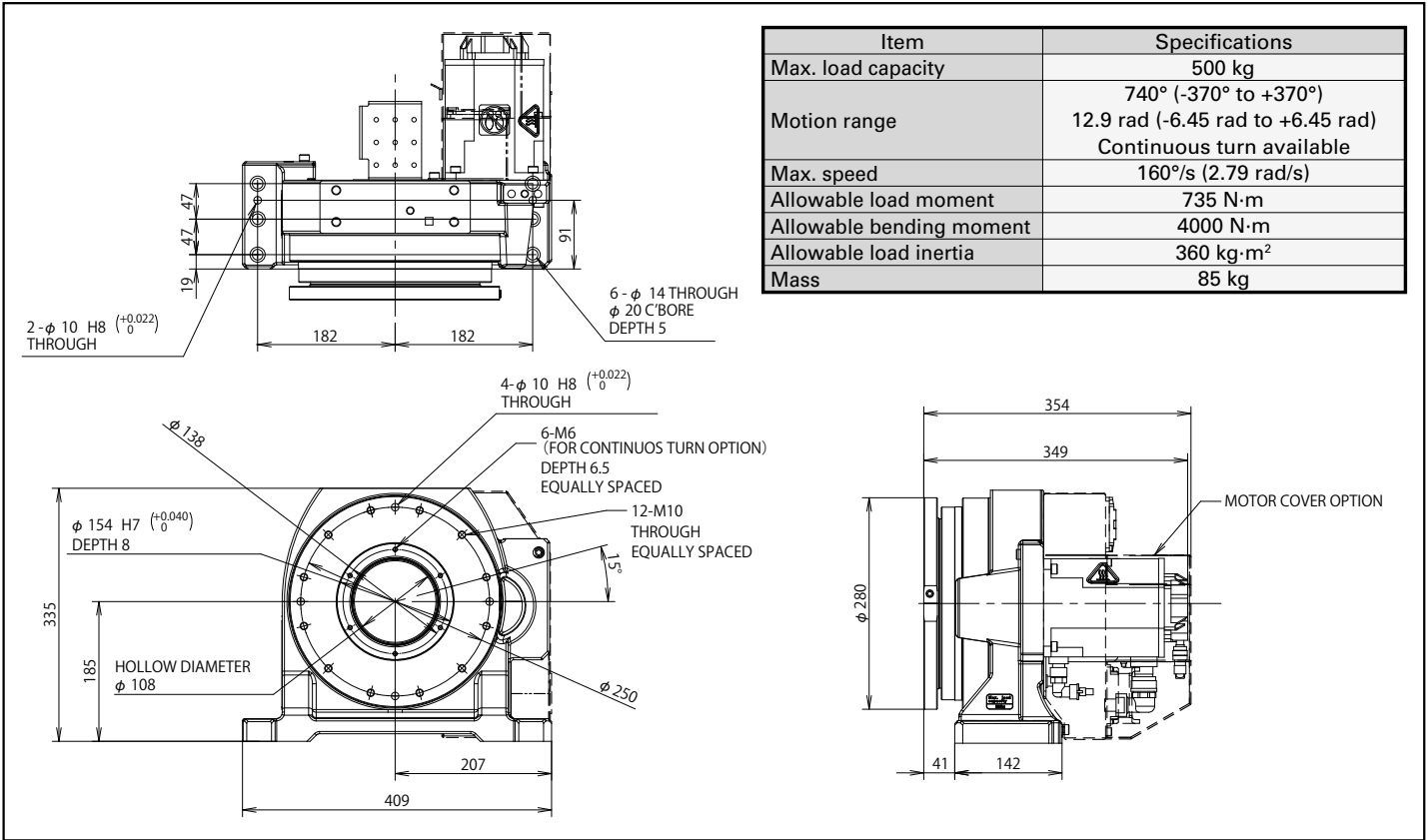
Aluminum part arc welding with 1-axis positioner with continuous turn option installed



Automobile part arc welding with 2-axis positioner

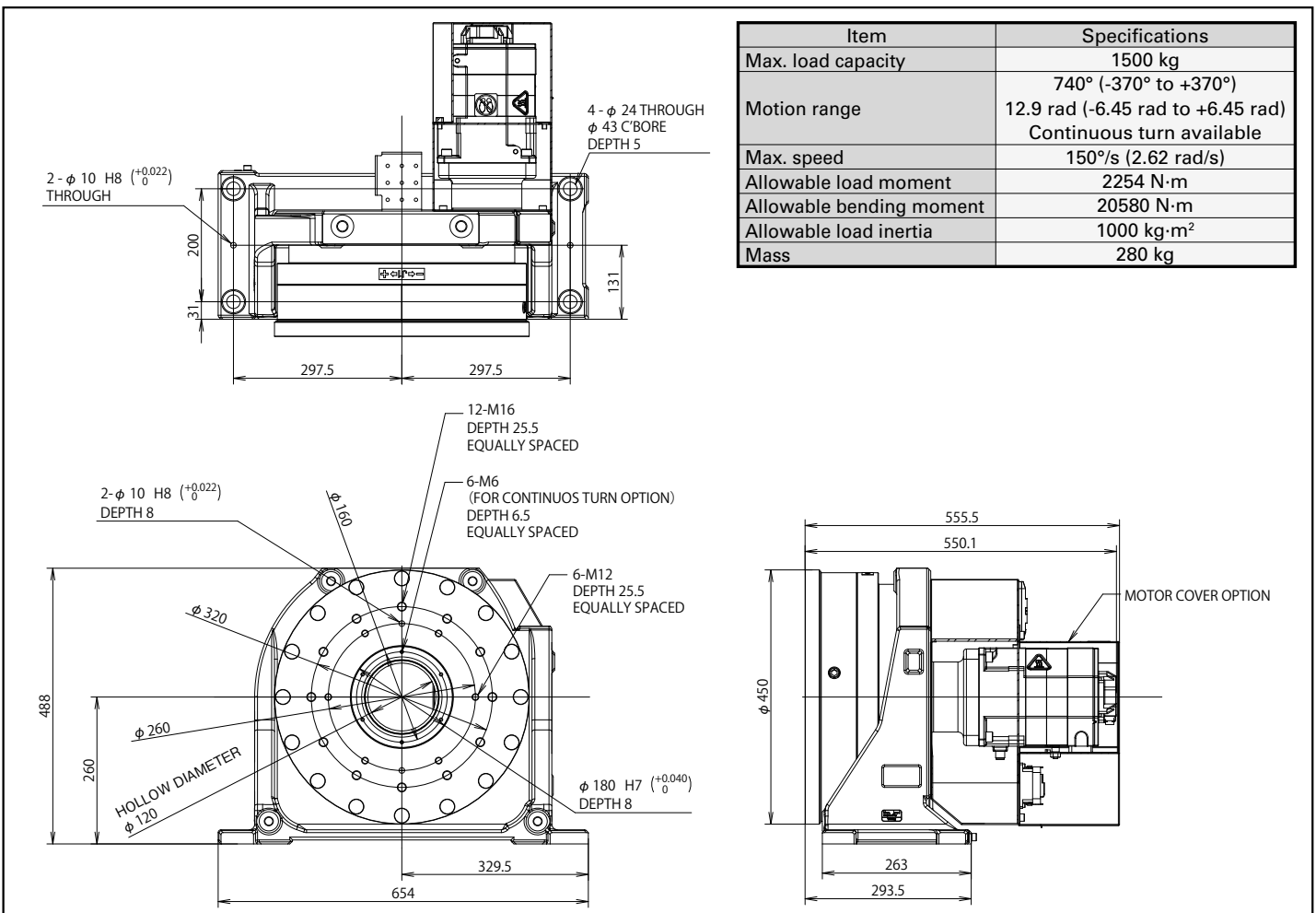
1-axis positioner for 500kg payload(hollow type)

Specifications and Outer Dimensions



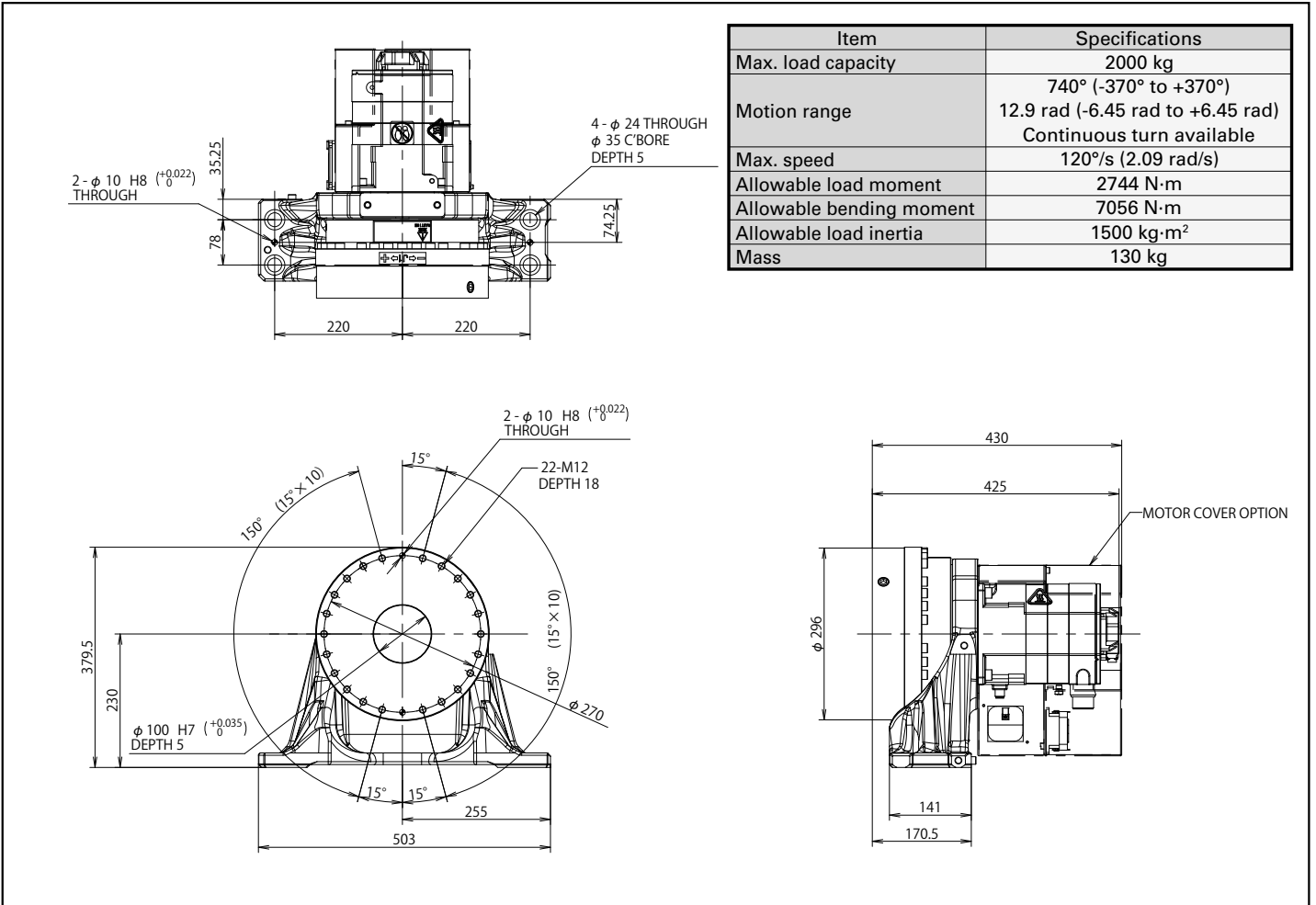
1-axis positioner for 1500kg payload(hollow type)

Specifications and Outer Dimensions



1-axis positioner for 2000kg payload (small type)

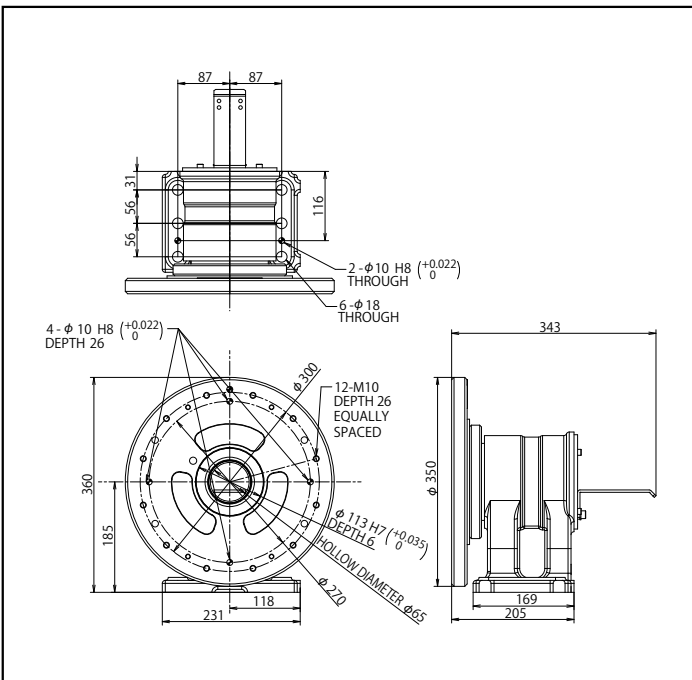
Specifications and Outer Dimensions



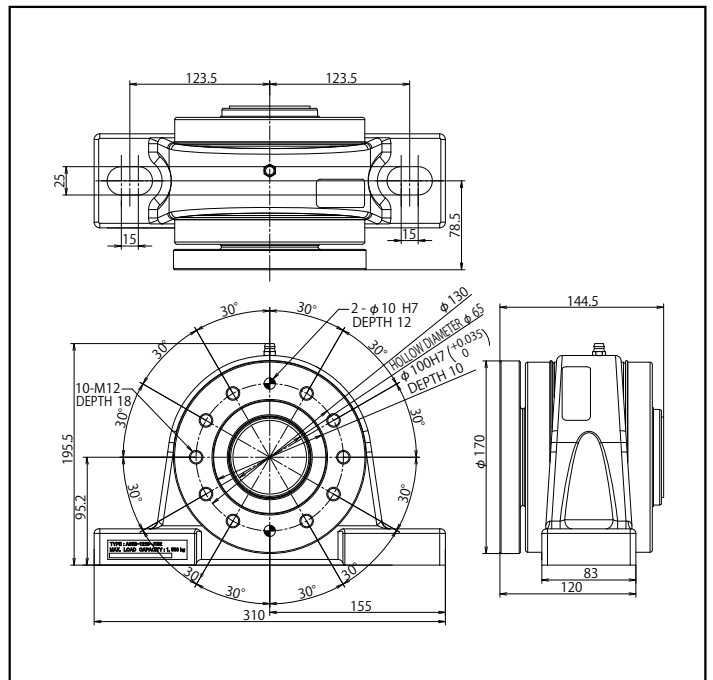
Follower unit for 1-axis positioner

Outer Dimensions

Insulated flange

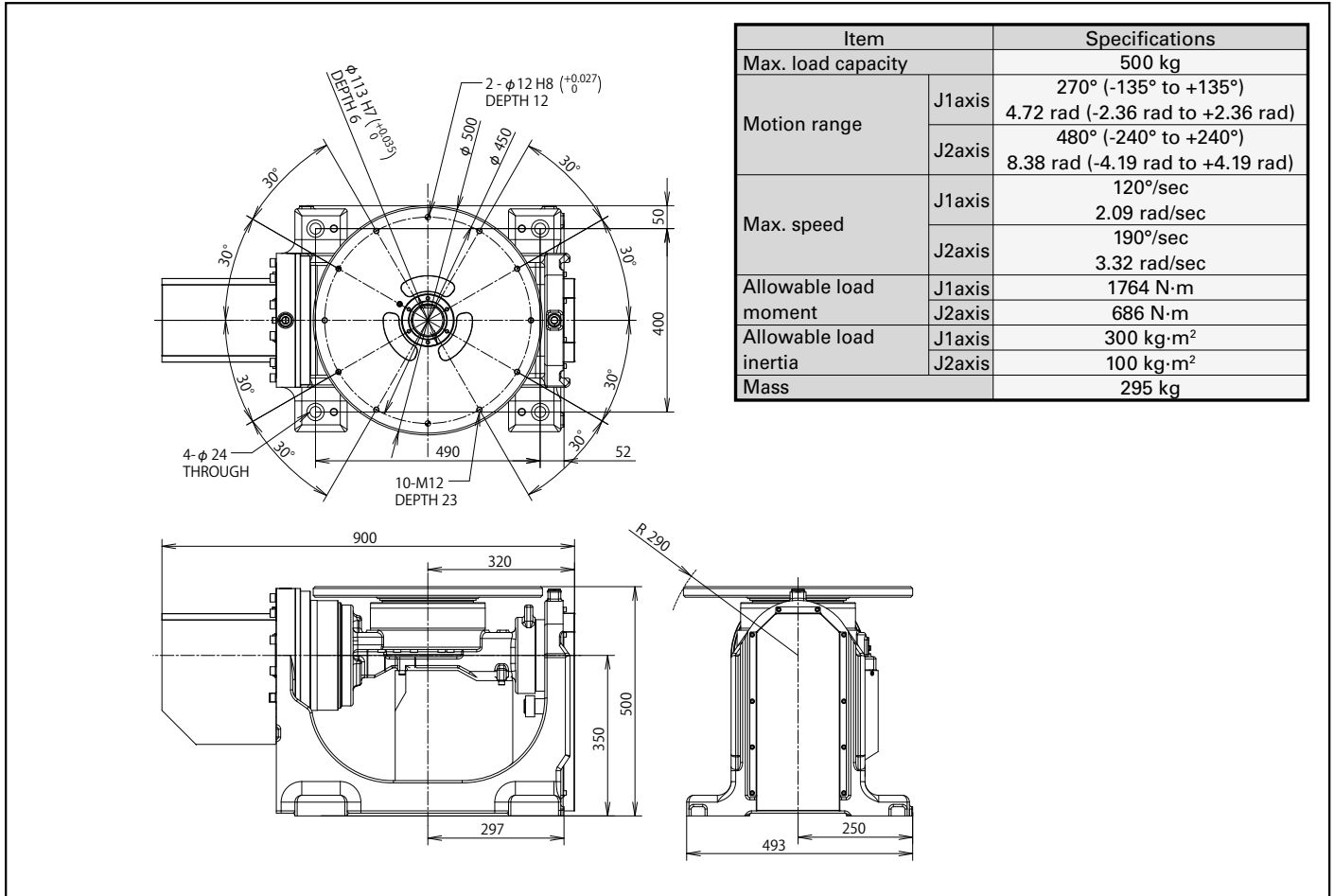


Non-insulated flange



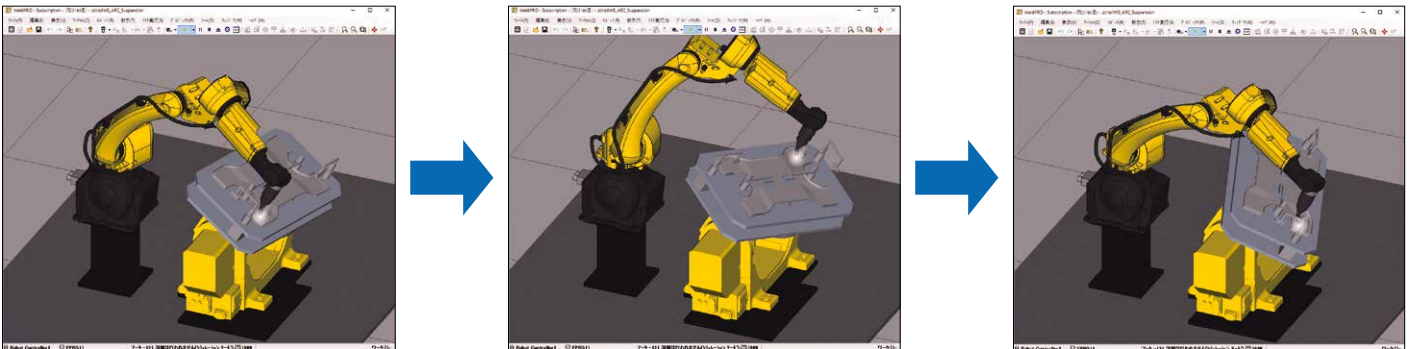
2-axis positioner

Specifications and Outer Dimensions



ROBOGUIDE Offline Teaching

Multi-arm coordinated motion is generated by ROBOGUIDE.



FANUC CORPORATION

•Headquarters 3580, Shibokusa, Oshino-mura, Minamitsuru-gun
Yamanashi, 401-0597, JAPAN
Phone: (+81)555-84-5555 <https://www.fanuc.co.jp/>

•Overseas Affiliated Companies
FANUC America Corporation
FANUC Europe Corporation, S.A.
SHANGHAI-FANUC Robotics CO., LTD.
KOREA FANUC CORPORATION
TAIWAN FANUC CORPORATION
FANUC INDIA PRIVATE LIMITED
FANUC SINGAPORE PTE. LTD.
FANUC THAI LIMITED
FANUC MECHATRONICS (MALAYSIA) SDN. BHD.
PT. FANUC INDONESIA
FANUC OCEANIA PTY. LIMITED
FANUC SOUTH AFRICA (PROPRIETARY) LIMITED

Phone: (+1)248-377-7000
Phone: (+352)727777-1
Phone: (+86)21-5032-7700
Phone: (+82)55-278-1200
Phone: (+886)4-2359-0522
Phone: (+91)80-2852-0057
Phone: (+65)6567-8566
Phone: (+66)2-714-6111
Phone: (+60)3-3082-1222
Phone: (+62)21-4584-7285
Phone: (+61)2-8822-4600
Phone: (+27)11-392-3610

<https://www.fanucamerica.com/>
<https://www.fanuc.eu/>
<https://www.shanghai-fanuc.com.cn/>
<https://www.fkc.co.kr/>
<https://www.fanuctaiwan.com.tw/>
<https://www.fanucindia.com/>
<https://www.fanuc.com/ftp/>
<https://www.fanuc.com/fth/>
<https://www.fanuc.com/fmm/>
<https://www.fanuc.com/fin/>
<https://www.fanucoceania.com.au/>
<https://fanuc.co.za/>

•All specifications are subject to change without notice.
•No part of this catalog may be reproduced in any form.
•The products in this catalog are controlled based on Japan's "Foreign Exchange and Foreign Trade Law". The export from Japan may be subject to an export license by the government of Japan. Further, re-export to another country may be subject to the license of the government of the country from where the product is re-exported. Furthermore, the product may also be controlled by re-export regulations of the United States government. Should you wish to export or re-export these products, please contact FANUC for advice.

© FANUC CORPORATION, 2015

Positioner(E)-03b, 2022.4, Printed in Japan