

Maintenance and diagnostic functions to  
prevent unexpected downtime

# FANUC

## ZDT



# Realizing 0 (Zero) Down Time

Advance notifications issued before failures prevent unexpected downtime.



## ZDT Benefits

A single robot breakdown can cause significant system production downtime. ZDT includes analytics that can detect robot abnormalities and provide advance notification that action is required so maintenance can be performed to prevent unexpected downtime.

Installed base

Over **35,000** robots connected to ZDT

ZDT has prevented over

**1,800** cases of robot downtime

\*2023 August results

# ZERO DOWNTIME

Robot Maintenance and Diagnostic functions using IoT technology

ZDT(Zero Down Time) is a proven IoT solution designed to eliminate unexpected downtime on the factory floor. ZDT uses "Mechanical Health", "Process Health", "System Health" and "Maintenance Health" to eliminate downtime.



# ZERO DOWN TIME



**Predictive analytics and functions to detect abnormalities allow maintenance to be performed before failure occurs, which means zero down time.**

## » Maintenance and Diagnosis Functions of ZDT

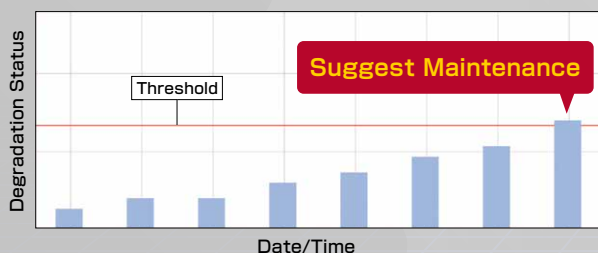


### Mechanical Health

#### Predict failure

##### Reducer Diagnosis

This function diagnoses the deterioration of the reducer on each axis. A notification will be sent when the degradation exceeds the threshold, so robot failure can be predicted in advance.



##### Other Functions

- Motor Torque Analysis
- Servo Off Alarm Log

##### Benefits

- Predict abnormalities weeks in advance
- Schedule inspections and repairs during planned production stoppages
- Prevent unexpected downtime

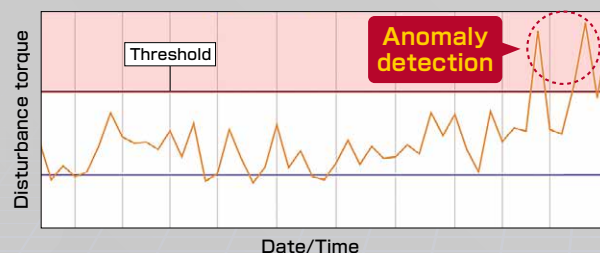
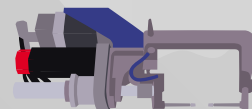


### Process Health

#### Prevent product defects

##### Servo Gun Diagnosis

This function diagnoses servo gun abnormalities. A notification is sent when the disturbance torque exceeds the threshold, so downtime due to servo gun failure can be prevented.



##### Other Functions

- Spot Weld Log
- Arc Welding Condition Diagnosis

##### Benefits

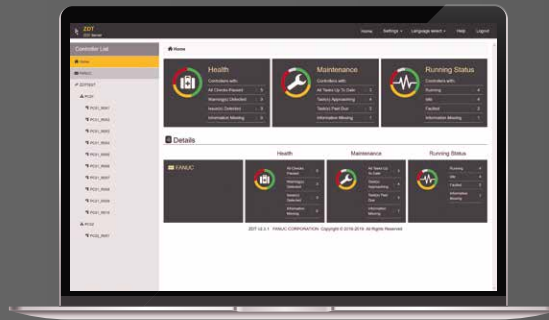
- Detect machining abnormalities
- Early detection of process quality issues due to improper welding
- Prevent unexpected downtime due to process equipment abnormalities



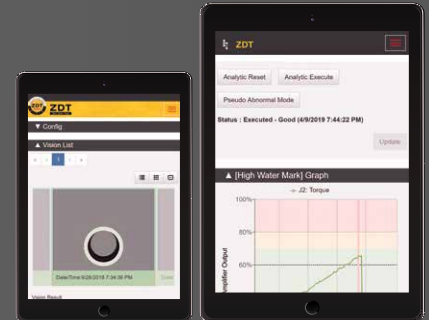
## Central Data Management

Centralized robot data management. Robots can be monitored anytime, anywhere with a PC or smart device.

PC



Smart device

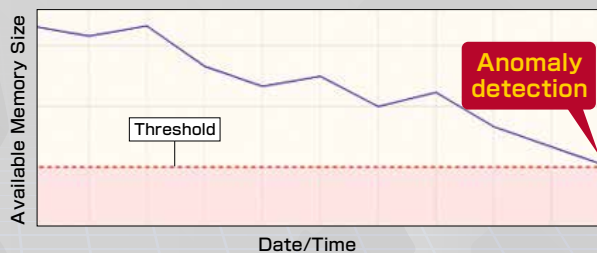
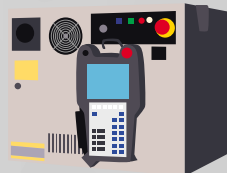


## System Health

Make efficient operation

### Controller Memory Status

This function calculates and displays a summary of the free memory space on the controller. It sends a notification if free memory goes below a pre-determined threshold, preventing unexpected downtime due to lack of memory.



#### Other Functions

- Program Change Log
- Alarm Log

#### Benefits

- Check controller memory status
- Improve operating rate of robot
- Use Operation Log or Alarm Log to diagnose issues



## Maintenance Health

Optimize maintenance

### Maintenance Reminder

This function tracks the status of recommended robot maintenance items and optimal replacement time for consumables. In addition to optimizing maintenance costs, component life is extended through proper maintenance timing.



Icon allows to notice the status at a glance



Perform maintenance at 0%

#### Other Functions

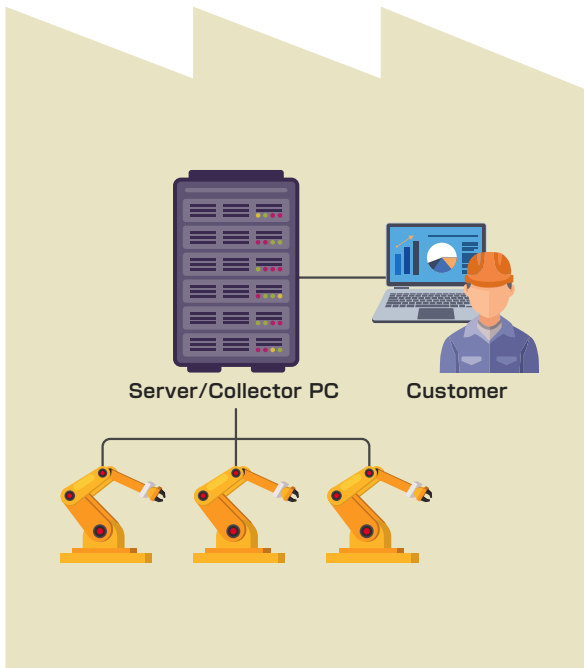
- Grease Change Notifications
- Cable Change Notifications

#### Benefits

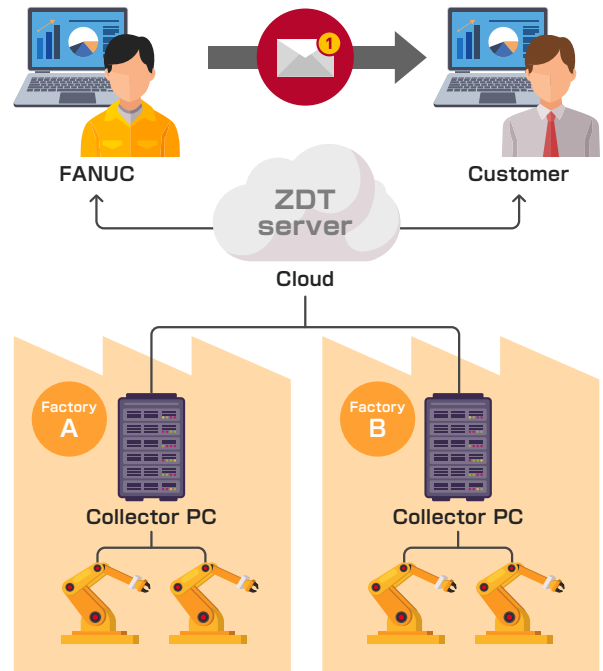
- Make a reliable maintenance plan
- Extend robot life
- Reduce maintenance costs

# Select From 2 ZDT Types

## ZDT(On-Premise)



## ZDT(Cloud)



Platform	ZDT	
	On-Premise	Cloud
Data storage location	Inside factory	Outside factory
Diagnosis	Yes	Yes
Analysis by FANUC service personnel	No	Yes
Features	No connection to external networks	Access across many factories
Devices	Server/Collector PC	Collector PC
CPU	Intel® Xeon® processor E5-2660 v4 × 2 (2.00 GHz, 14-core, 35 MB cache)	Intel® Core™ i5 or higher
Memory	32 GB or more	16 GB or more
Hard disk capacity	2 TB or more	160 GB or more
Software	VMware Workstation™ 14 Pro or later, or VMware Workstation Player™ (Windows version)	VMware Workstation™ 14 Pro or later, or VMware Workstation Player™ (Windows version)

\*Required specifications depend on the number of robots connected and functions used.

\*Robot data stored on a ZDT Server can be viewed with a web browser. Supported browsers are the latest version of Google Chrome and Microsoft Edge.

\*An internet connection is required if using ZDT Cloud.

\*VMware is the name of virtualization software developed by VMware. Please refer to the VMware website for details and specifications for this software.

## FANUC CORPORATION

•Headquarters 3580, Shibokusa, Oshino-mura, Minamitsuru-gun  
Yamanashi, 401-0597, JAPAN  
Phone: (+81)555-84-5555 <https://www.fanuc.co.jp/>

### •Overseas Affiliated Companies

FANUC America Corporation  
FANUC Europe Corporation, S.A.  
SHANGHAI-FANUC Robotics CO., LTD.  
KOREA FANUC CORPORATION  
TAIWAN FANUC CORPORATION  
FANUC INDIA PRIVATE LIMITED  
FANUC SINGAPORE PTE. LTD.  
FANUC THAI LIMITED  
FANUC MECHATRONICS (MALAYSIA) SDN. BHD.  
PT. FANUC INDONESIA  
FANUC OCEANIA PTY. LIMITED  
FANUC SOUTH AFRICA (PROPRIETARY) LIMITED

Phone: (+1)248-377-7000  
Phone: (+352)727777-1  
Phone: (+86)21-5032-7700  
Phone: (+82)55-278-1200  
Phone: (+886)4-2359-0522  
Phone: (+91)80-2852-0057  
Phone: (+65)6567-8566  
Phone: (+66)2-714-6111  
Phone: (+60)3-3082-1222  
Phone: (+62)21-4584-7285  
Phone: (+61)2-8822-4600  
Phone: (+27)11-392-3610

<https://www.fanucamerica.com/>  
<https://www.fanuc.eu/>  
<https://www.shanghai-fanuc.com.cn/>  
<https://www.fkc.co.kr/>  
<https://www.fanuctaiwan.com.tw/>  
<https://www.fanucindia.com/>  
<https://www.fanuc.com/fsp/>  
<https://www.fanuc.com/fth/>  
<https://www.fanuc.com/fmm/>  
<https://www.fanuc.com/fin/>  
<https://www.fanucoceania.com.au/>  
<https://fanuc.co.za/>

- All specifications are subject to change without notice.
- No part of this catalog may be reproduced in any form.
- The products in this catalog are controlled based on Japan's "Foreign Exchange and Foreign Trade Law". The export from Japan may be subject to an export license by the government of Japan. Further, re-export to another country may be subject to the license of the government of the country from where the product is re-exported. Furthermore, the product may also be controlled by re-export regulations of the United States government. Should you wish to export or re-export these products, please contact FANUC for advice.

© FANUC CORPORATION, 2019  
ZDT(E)-03, 2023.11, Printed in Japan