

"Connect, Visualize, Think, Drive" for Manufacturing

FIELD system

FANUC Intelligent Edge Link & Drive system

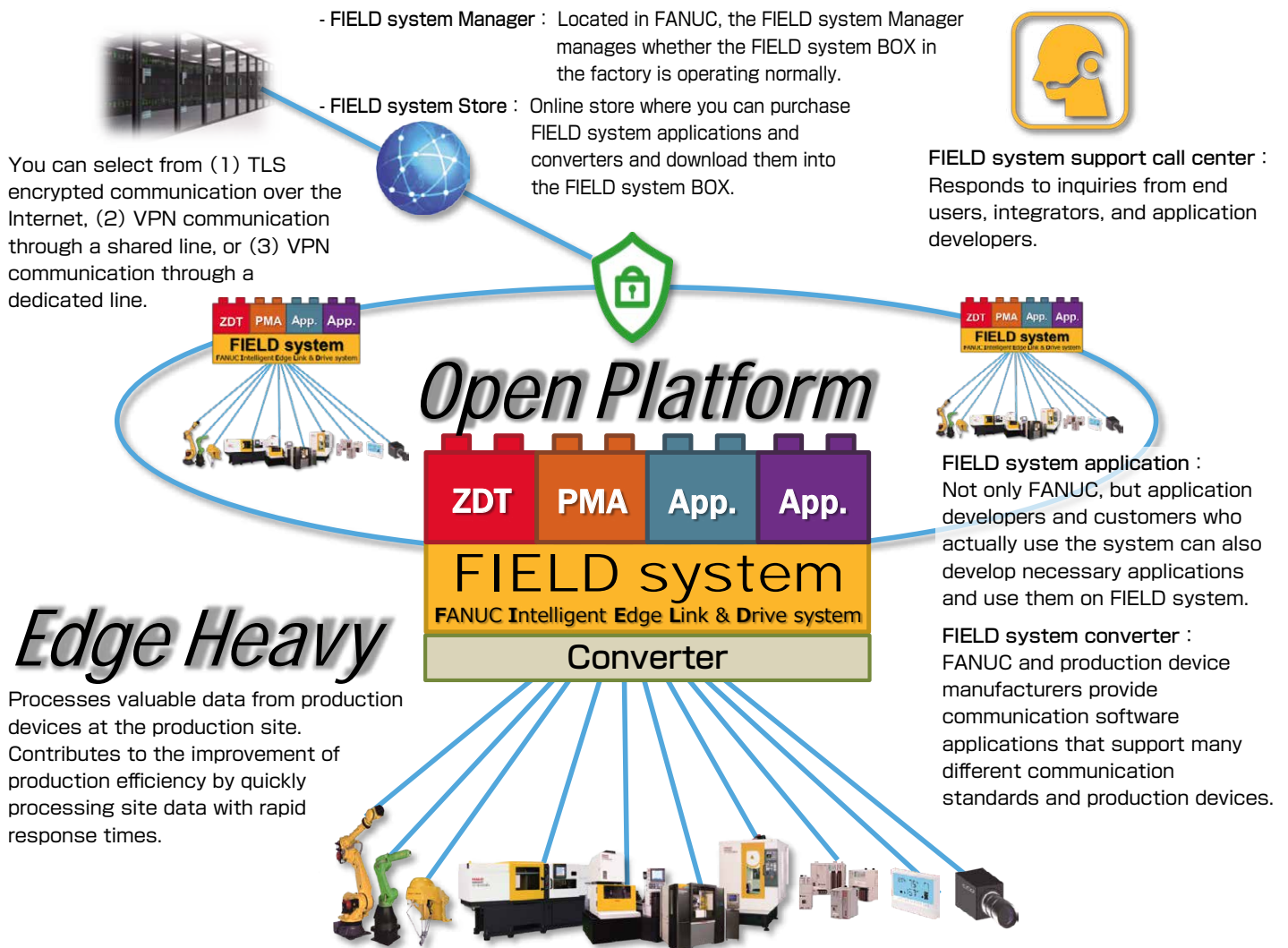


FANUC

FIELD system

Connecting together all information for better

Overall picture of FIELD system



Connect everything

- Ability to connect not only the latest FANUC products (CNCs, Robots, and ROBOMACHINES) but also to existing machinery in the factory.
- General-purpose communication standard, OPC UA and MTConnect are supported.
- Production device manufacturers can create and provide converters for their production devices.



Multilayer defense security

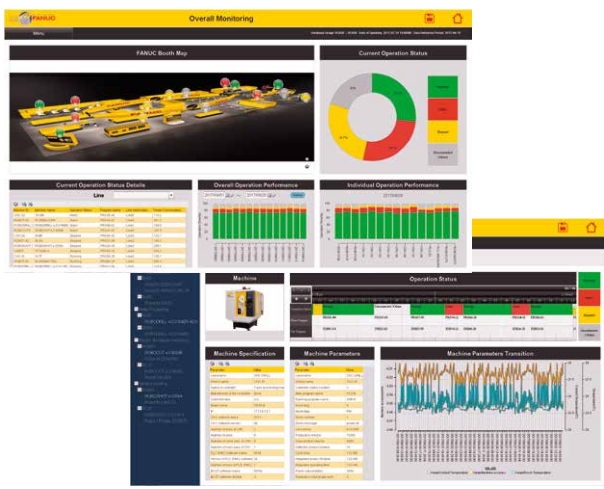
FIELD system is configured with a multilayer defense system that employs multiple security technologies on all the layers, that is, the server, network, and the FIELD system BOX.

- FIELD system installed in the factory controls access to determine whether to permit access to (1) user data, (2) application data, and (3) production device data. In the case where an application fails, data accesses except for predefined ones are blocked.
- Unnecessary access is limited between production devices. The network switch and other devices separate networks in the factory, control paths, and identify production devices.
- FIELD system Manager and the FIELD system Store adopt multiple security technologies such as integrated threat management and security software.

production devices at the manufacturing site to consolidate productivity and nonstop production in the factory.

FIELD system PMA

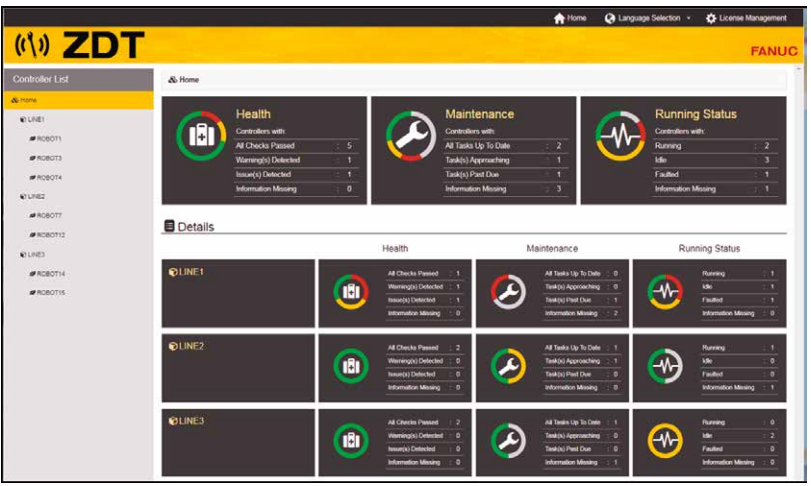
- FIELD system PMA is an application to analyze factory operation and improve productivity.
- FIELD system PMA can monitor the operating status of each production device in real time.
- FIELD system PMA collects the operation results of each production device including the operating time and alarm time and uses them for factor analysis.
- FIELD system PMA is helpful in improving the productivity by statistically analyzing collected data and visualizing tendencies and statuses with numerical values and graphs.



PMA : Production Monitoring & Analysis

FIELD system ZDT

- FIELD system ZDT is an application to reduce unexpected downtime of production devices.
- FIELD system ZDT monitors the statuses of FANUC CNCs and robots and generates error alerts.
- FIELD system ZDT notifies the user of periodical maintenance and encourages preventive maintenance.
- FIELD system ZDT reduces maintenance costs and the workload of maintenance staff by centrally managing the maintenance statuses of production devices.



ZDT : Zero Down Time

Applications assisting the manufacturing site

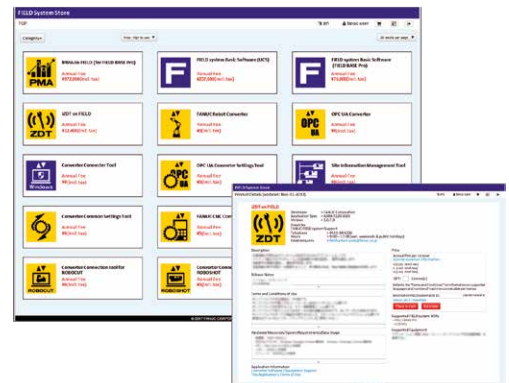
- FANUC provides an application to manage workers and their operation history records in bulk and an application to predict the processing time of the NC program.
- In addition, not only FANUC but also application developers and customers who actually use the system can develop necessary applications and use them on FIELD system.



FIELD system Partners WEB
<https://portal.field-system.org/partner/portal/>

FIELD system Store

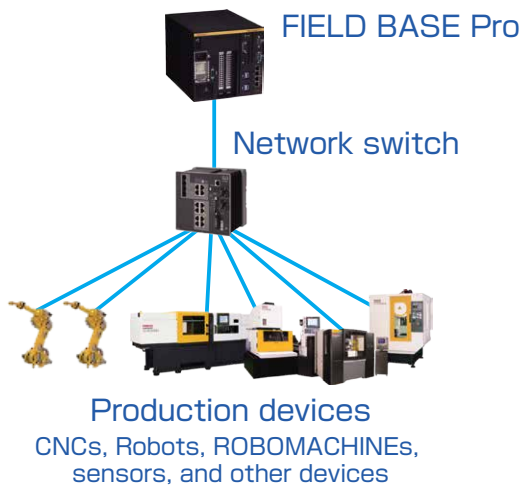
- Once applications and converters to be used on FIELD system pass the review process conducted by FANUC, they are available in the FIELD system Store and can be downloaded and installed from there.
- You can easily check the latest versions of applications and converters and update your current applications and converters.
- You can also check your purchase history or get quotations.



System Configuration

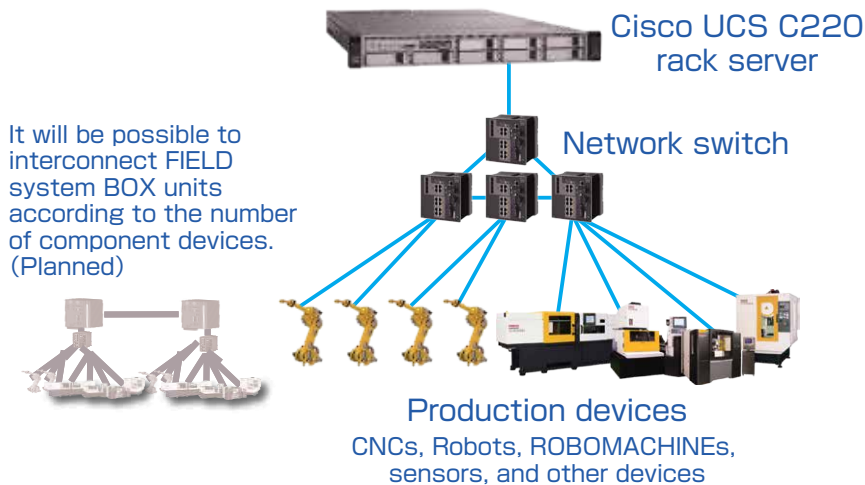
Small-scale system

(Connected to about 30 production devices.)



Large-scale system

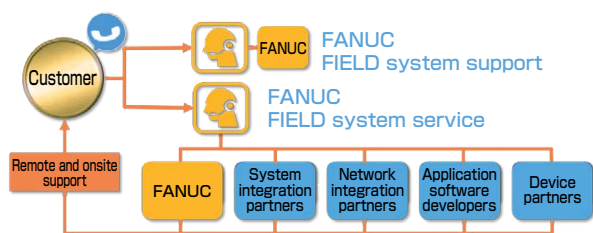
(Connected to about 150 production devices.)



FIELD system Hardware Specifications

Item	Specifications	
	FIELD BASE Pro	UCS® C220
CPU	Intel Xeon® 2.8GHz 4 core	Intel Xeon® 2.2GHz 14 core x2
Memory	16GB	64GB
Storage	SSD 1TB	SSD 4TB RAID5

FIELD system Support Call Center



FIELD system is an IoT system for manufacturers jointly developed with Cisco Systems, Inc., Rockwell Automation, Inc., Preferred Networks, Inc., and NTT Group under an initiative of FANUC.

FANUC CORPORATION

Oshino-mura, Yamanashi 401-0597, Japan Phone: (+81)555-84-5555 <https://www.fanuc.co.jp/>

- The appearance and specifications of the system are subject to change without notice for the purpose of improvement.
 - The reproduction of this catalog is prohibited.
 - The products described in this catalog are subject to Japan's Foreign Exchange and Foreign Trade Law. You may have to obtain permission from the Japanese government before exporting some products. In addition, some products are subject to U.S. reexport control. Contact FANUC before exporting the products described in this catalog.
 - The company names and product names in this catalog are trademarks or registered trademarks of the respective owners.

© FANUC CORPORATION, 2018
 FIELD system(E)-01b, 2021.9, Printed in Japan