

# FANUC ROBODRILL DDR-TiB



Max. rotation speed  
200 min<sup>-1</sup> (\*1)

Indexing 180°  
0.34 s (\*2)

Clamp torque  
(700+400) N·m

Max. loading mass  
200 kg (\*3)

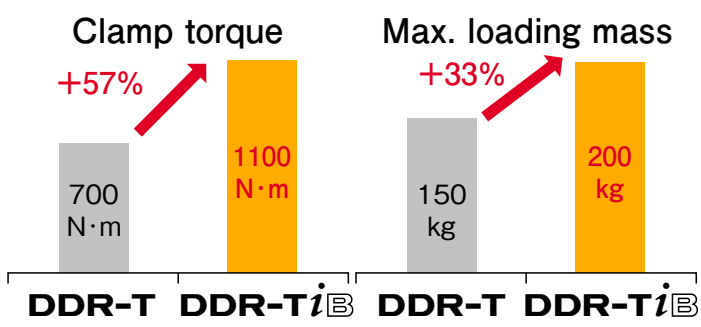
## FEATURES

- Making the best use of ROBODRILL's working space
- Enhancing rigidity and loading capacity by optimizing the shape of casting body
- Achieving higher clamp torque by new clamp mechanism of **DDRiB** and support spindle
- Initial setting and automatic parameter adjustment according to mounted fixture by **DDR** setting screen

## Application example



## Comparison with the previous model



## DDR setting screen



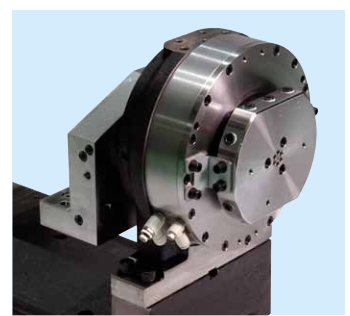
Initial setting

Parameter adjustment

## Options



Rotary joint  
(DDRiB side)

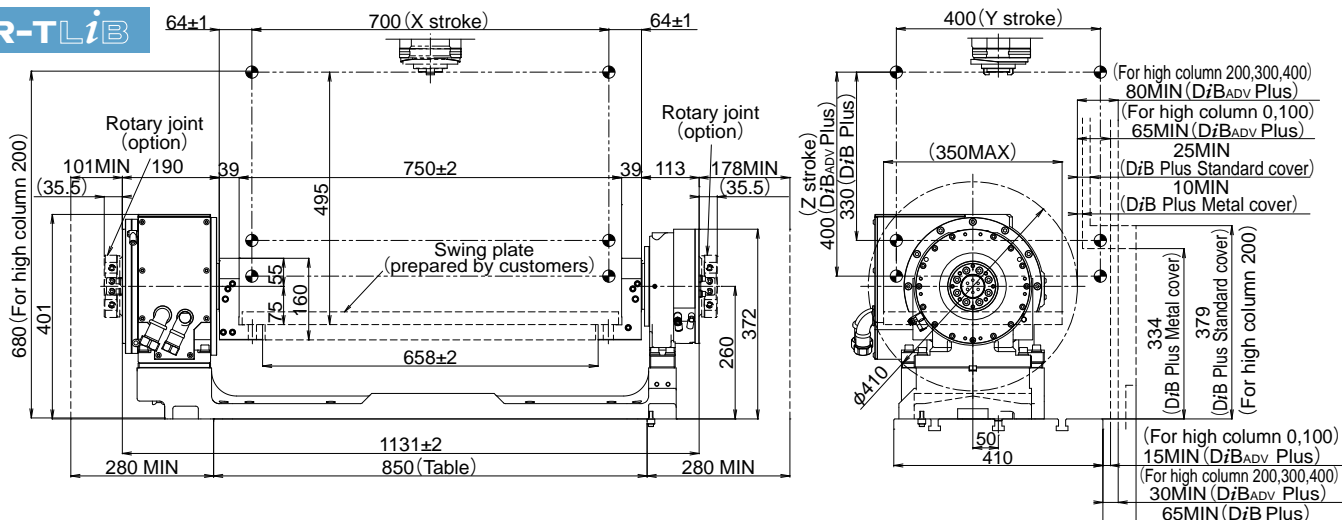


Rotary joint  
(Tail support side)

\*1 : When loading mass is under 100 kg and workpiece inertia is under 1.0 kg·m<sup>2</sup>.  
 \*2 : When loading mass is under 50 kg and workpiece inertia is under 0.5 kg·m<sup>2</sup>.  
 \*3 : Except DDR-TSiB. The maximum rotation speed is limited to 100 min<sup>-1</sup>.

# Outer dimensions

**DDR-TLiB**



# Specifications

No.	Items	DDR-TSiB / DDR-TMiB / DDR-TLiB			Remarks
		DDR-TSiB	DDR-TMiB / DDR-TLiB raised version (※1)	DDR-TLiB	
1	Drive system	Direct drive			
2	Cooling system	None			
3	Maximum torque	275 N·m			
4	Continuous rating	46 N·m			
5	Maximum rotation speed	200 min <sup>-1</sup>	200 min <sup>-1</sup>	100 min <sup>-1</sup>	
6	Maximum loading mass	50 kg	100 kg	200 kg	
7	Allowable workpiece inertia	J = 0.5 kg·m <sup>2</sup> (GD <sup>2</sup> = 2.0 kgf·m <sup>2</sup> )	J = 1.0 kg·m <sup>2</sup> (GD <sup>2</sup> = 4.0kgf·m <sup>2</sup> )	J = 4.0 kg·m <sup>2</sup> (GD <sup>2</sup> = 16.0kgf·m <sup>2</sup> )	
8	Feedrate	1°/min to 30000°/min			
9	Least input increment	0.0001°			
10	Index accuracy	±0.0028° (±10")			Indexing Accuracy of DDRiB
11	Clamp system	Air Pressure + spring			
12	Clamp torque	1100 N·m with 0.5 MPa air supply			700 N·m (DDRiB) 400 N·m (Tail support)
13	Spindle hole diameter	φ46 mm			
14	Turning diameter	Max. φ310 mm	Max. φ410 mm : DDR-TMiB / DDR-TLiB Max. φ540 mm : DDR-TLiB raised version (※2)		
15	Center height	200 mm	260 mm : DDR-TMiB / DDR-TLiB 325 mm : DDR-TLiB raised version		
16	Mass	155 kg	190 kg : DDR-TMiB 200 kg : DDR-TLiB 215 kg : DDR-TLiB raised version		+6 kg with a rotary joint (option)
17	Rotary joint (option)	Number of ports : 6 Maximum pressure : air 0.5 MPa hydraulic 5 MPa (standard) / 20 MPa (high pressure)			12ports when mounted on both DDRiB and tail support side (Except DDR-TSiB)

※1 : **DDR-TLiB** raised version is only for **FANUC ROBOTDRILL α-D14/21/23LiB5<sub>Adv</sub> Plus Y500**.

※2 : When turning diameter is φ500mm, the distance between turning diameter and Z-axis cover is approx. 20mm.  
When turning diameter exceeds φ500mm, please take care not to interfere with Z-axis cover.

# FANUC CORPORATION

3580, Shibokusa, Oshino-mura, Minamitsuru-gun, Yamanashi, 401-0597, JAPAN  
Phone: (+81)555-84-5555 <https://www.fanuc.co.jp/>

- All specifications are subject to change without notice.
- No part of this catalog may be reproduced in any form.
- The photo includes options.
- The products in this catalog are controlled based on Japan's "Foreign Exchange and Foreign Trade Law". The export of these products from Japan is subject to an export License by the government of Japan.  
Further, re-export to another country may be subject to the license of the government of the country from where the product is re-exported.  
Furthermore, the product may also be controlled by re-export regulations of the United States government.
- Should you wish to export or re-export these products, please contact FANUC for advice.

